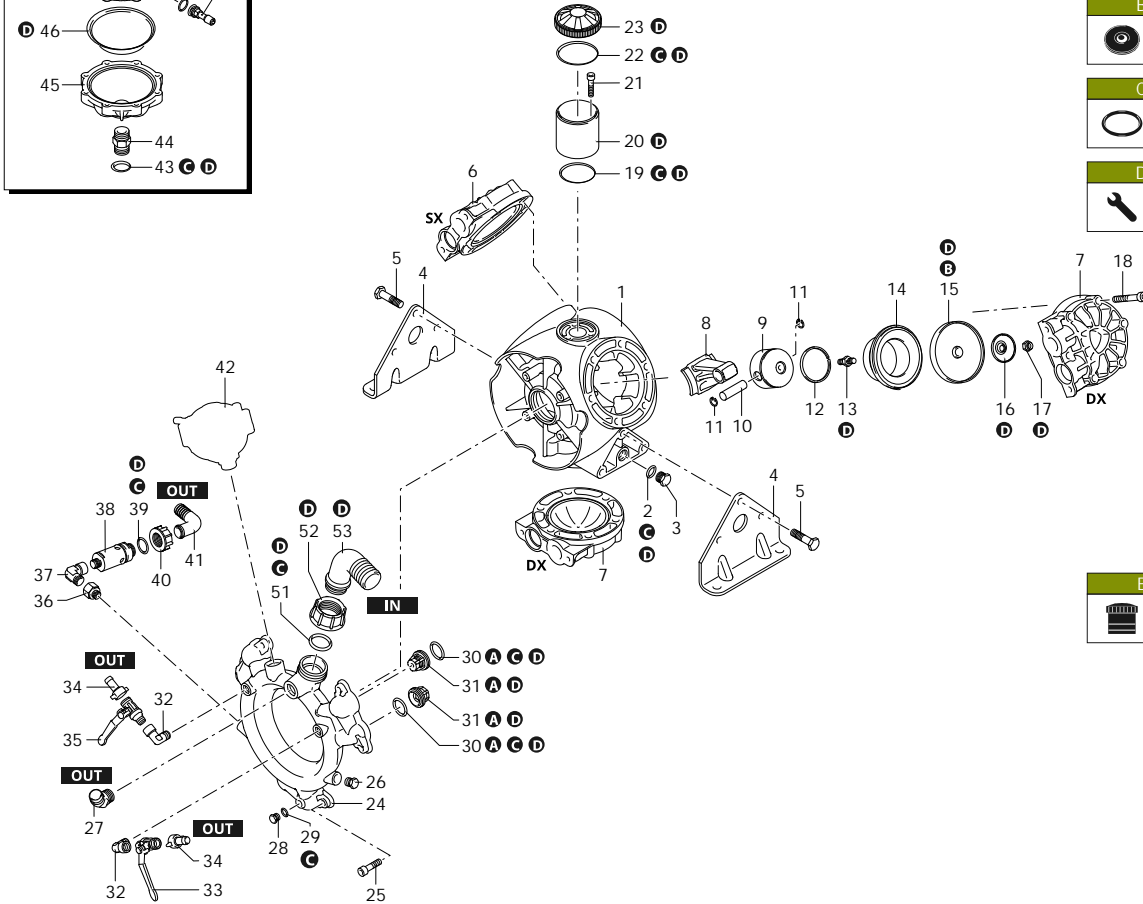
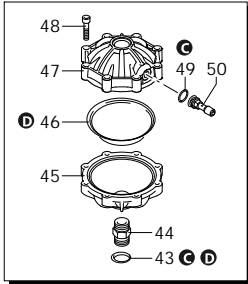




BHA 150

850 BHA 150 AP C/C - NBR



AR_01_028_v01

Customer: AR
Customer Code:



SAE 30
2,400 Kg

Revision: 1

Date: 05/07/2024

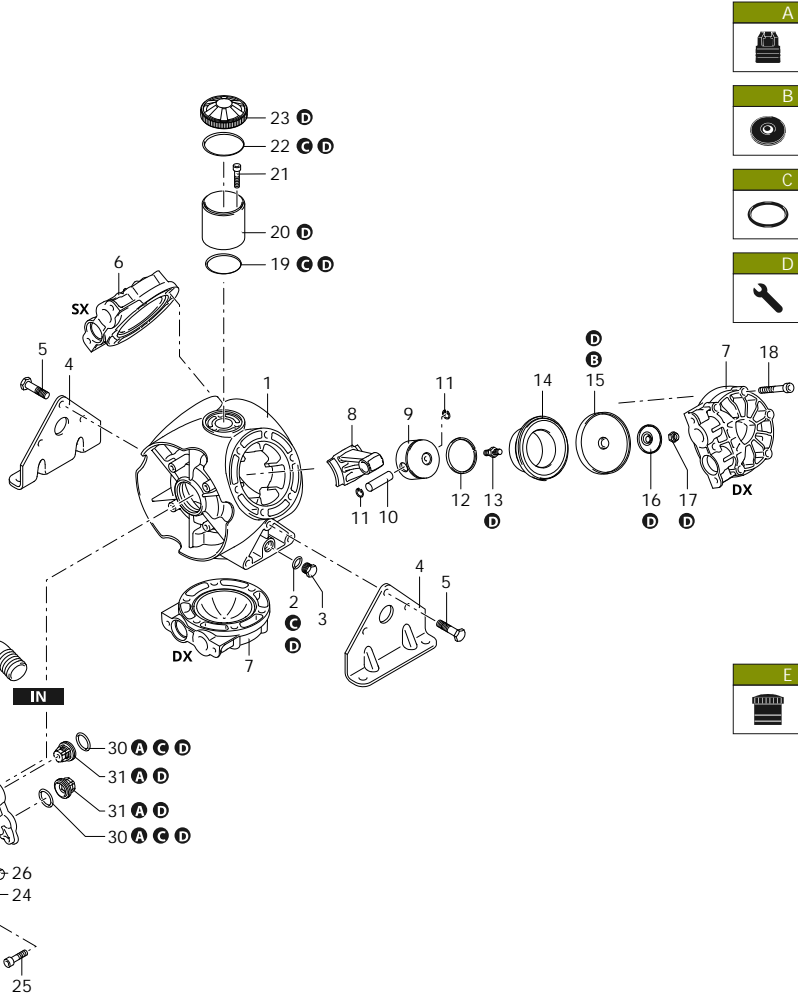
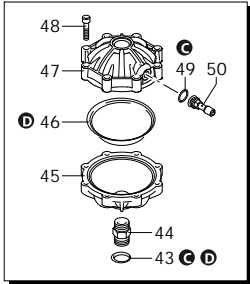
Validity: < XX/YY = From week/year

Code	Description	Q	Note	Validity
1	2240011 Pump body			1
2	180101 O-ring	Ø 17,5x2	2 Lubricate with motor oil	
3	820361 Plug	1/2" G brass	2	
4	2240190 Foot		2	
5	540100 Screw	TE M12x40	6 C=50Nm / Loxeal 55-14	
6	2240453 Head	sx	1	
7	2240452 Head	dx	2	
8	2240090 Connecting-rod		3	
9	2240350 Piston	Ø 82	3	
10	540070 Pin		3 Lubricate with motor oil	
11	160691 Ring	seeger Øi 18	6	
12	2240360 Piston ring		3	
13	2240100 Hub pin		3 C=30Nm / Loxeal 83-21	
14	2240520 Sleeve		3	
15	2240080 Diaphragm	NBR - Øe 120	3	
16	580090 Plate		3	
17	2240110 Nut	M10	3 C=25Nm	
18	2240470 Screw	TCEI M12x70	18 C=50Nm	
19	2240270 O-ring	Ø 26,65x2,62	1 Lubricate with motor oil	
20	2240070 Tank		1	
21	540290 Screw	TCEI M8x25	3 C=23Nm	
22	1040060 O-ring	Ø 72,69x2,62	1 Lubricate Molykote Longterm W2	
23	750050 Plug	threaded - red	1	
24	2240461 Line	intake/delivery	1	
25	650330 Screw	TCEI M10x35	6 C=40Nm	
26	880530 Plug	3/8" G	1 C=20Nm	
27	851650 Elbow		1 Loxeal 55-14	
28	880581 Plug	1/4" G	1 C=20Nm / Loxeal 24-18	
29	820510 O-ring	Ø 10,82x1,78	1	
30	680070 O-ring	Ø 31,5x4,25	6 Lubricate with motor oil	
31	2249050 Valve		6	
32	900210 Fitting	3/8" G (M-F)	2 Loxeal 83-21	
33	130491 Valve	3/8" G - 1/2" G (M-M)	1 C=20Nm / Loxeal 55-14	
34	110130 Ring nut	1/2" G	2	
35	130492 Valve	3/8" G - 1/2" G (M-M)	1 C=20Nm / Loxeal 55-14	
36	881461 Threaded adapter	3/8" G - 1/2" G	1 C=20Nm / Loxeal 83-21	
37	881560 Fitting	1/2" G (M-F)	1 C=20Nm / Loxeal 83-21	
38	1609002 Safety valve	50 bar	1 C=10Nm / Loxeal 24-18	
39	880831 O-ring	Ø 15,54x2,62 Viton	1 Lubricate Molykote G-807	
40	550450 Ring nut	3/4" G	1	
41	550460 Elbow	Ø 18	1	
42	1527 Air chamber	NBR	1	
43	720030 O-ring	Ø 22,22x2,62	1 Lubricate Molykote G-807	
44	2240490 Fitting		1 C=20Nm / Loxeal 24-18	
45	2240481 Semi air chamber	lower	1 Loxeal 83-21	
46	550190 Diaphragm	NBR - Øe 110	1	



BHA 150

850 BHA 150 AP C/C - NBR



Code	Description		Q	Note	Validity
------	-------------	--	---	------	----------

47	620234	Semi air chamber	upper	1	
48	380410	Screw	TCEI M8x40	8	C=20Nm
49	650542	Gasket		1	Lubricate with motor oil
50	180020	Air valve		1	C=3Nm / Loxeal 55-14
51	250310	O-ring	Ø 36,14x2,62	1	Lubricate with motor oil
52	540540	Ring nut	1" 3/4 G	1	
53	540550	Elbow	Ø 40	1	
A	2445	Valve kit		1	
B	2444	Diaphragms kit	NBR	1	
C	2446	O-ring kit		1	
D	2447	Maintenance repair kit	NBR	1	
E	47199	Tank kit		1	

AR_01_028_v01

Customer: AR
Customer Code:



SAE 30
2,400 Kg

Revision: 1

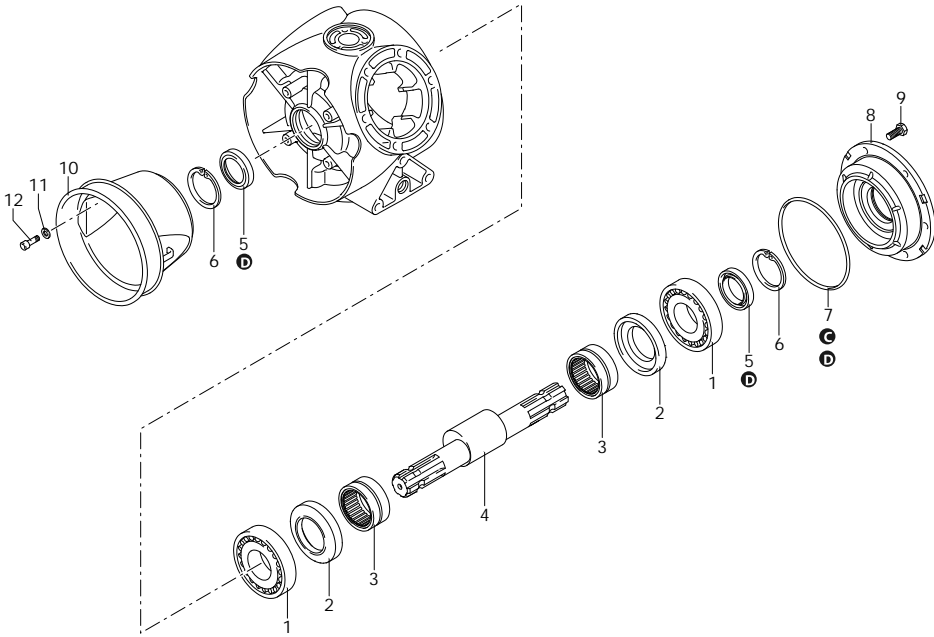
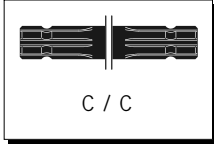
Date: 05/07/2024

Validity: < XX/YY = From week/year



BHA 150

850 BHA 150 AP C/C - NBR



Code	Description	Q	Note	Validity
1	2240430 Bearing		2 Press Mount	
2	2240121 Ring	Connecting-rod	2	
3	850320 Bearing		2	
4	2240173 Shaft	BE marked	1	
5	2240150 Ring	seal	2 Lubricate with Mineral Grease	
6	2240160 Ring	seeger Øi 62	2	
7	2240290 O-ring	Ø 152,7x2,62	1 Lubricate with motor oil	
8	2240020 Flange		1 Press Mount	
9	160670 Screw	TE M10x25	6 C=40Nm	
10	1500470 Cardan protection	Ø 239 mm	1	
11	390311 Washer		3	
12	850250 Screw	TCEI M8x12	3	
A	2445 Valve kit		1	
B	2444 Diaphragms kit	NBR	1	
C	2446 O-ring kit		1	
D	2447 Maintenance repair kit	NBR	1	

AR_03_047_v01

Customer: AR
Customer Code:



SAE 30
2,400 Kg

Revision: 1

Date: 05/07/2024

Validity: < XX/YY = From week/year